



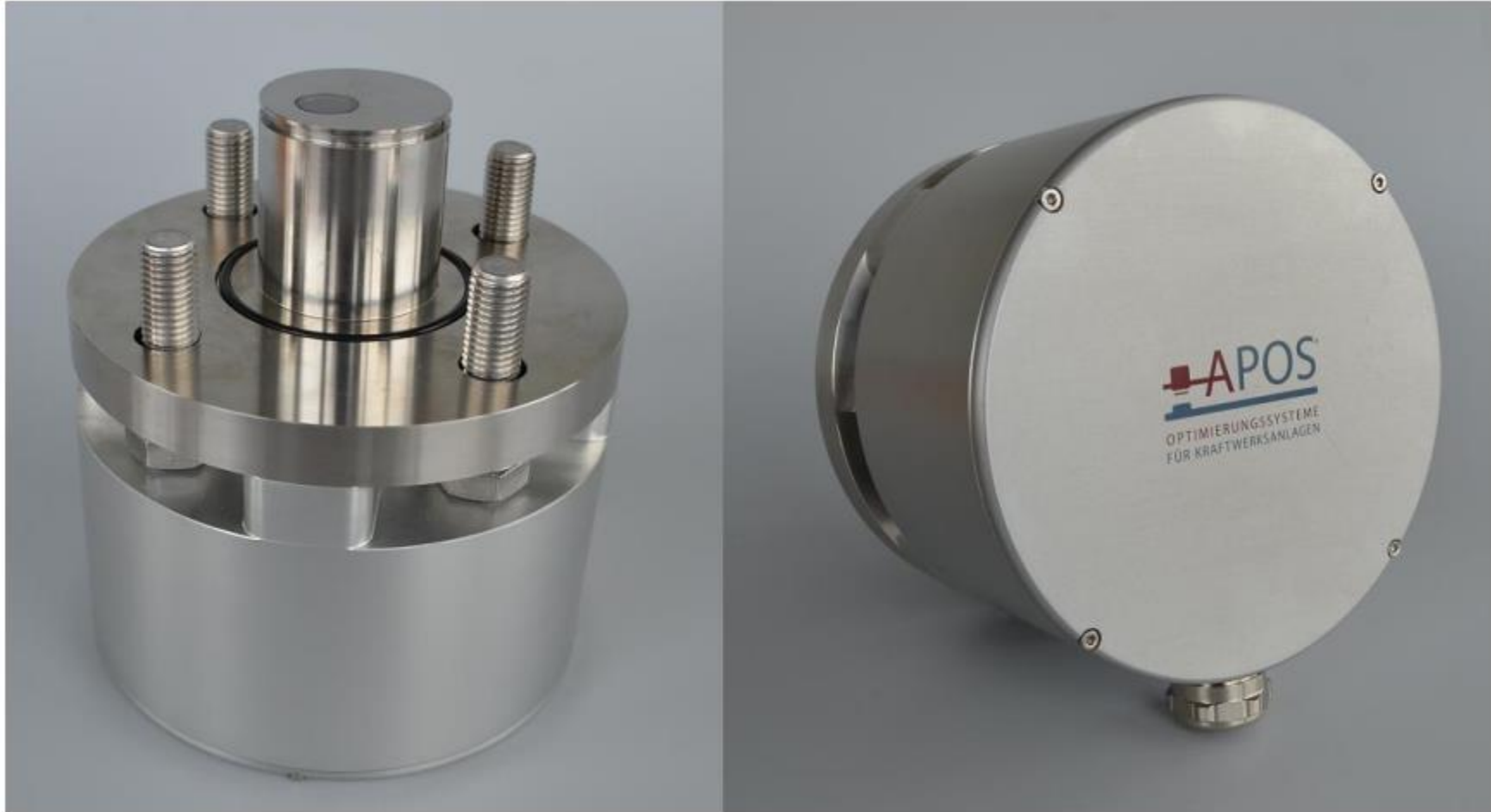
**Spectroscopy for the
Wood Industry**

MEMBER OF THE NYNOMIC GROUP

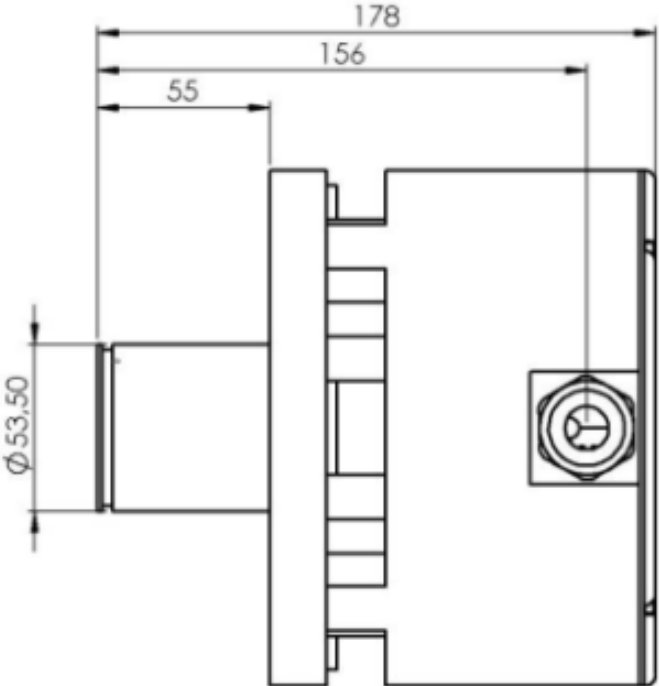
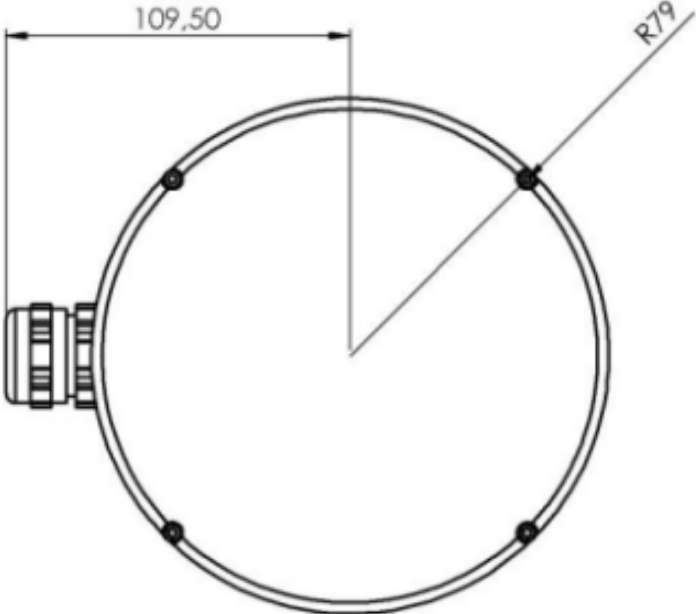
Installation examples – APOS measurement systems with contact and distance sensors and transflexion probe

June 2023

Contact Sensor



Contact Sensor - drawing



Contact Sensor – Advantages / Characteristics

- Ruggedized (IP 65 / Atex22)
- By measuring in contact, ambient conditions such as extraneous light, dust and humidity are irrelevant
- Self-cleaning by passing material
- Maintenance-free for the customer
- NIR bulbs stand ~8.000 hours
- Measurement of hot materials possible up to a material temperature of around 100°C
- Easy installation in many different conveying elements possible

Contact Sensor – Installation example – Screw conveyor



Contact Sensor – Installation example – Screw conveyor



Contact Sensor – Installation example – Shute



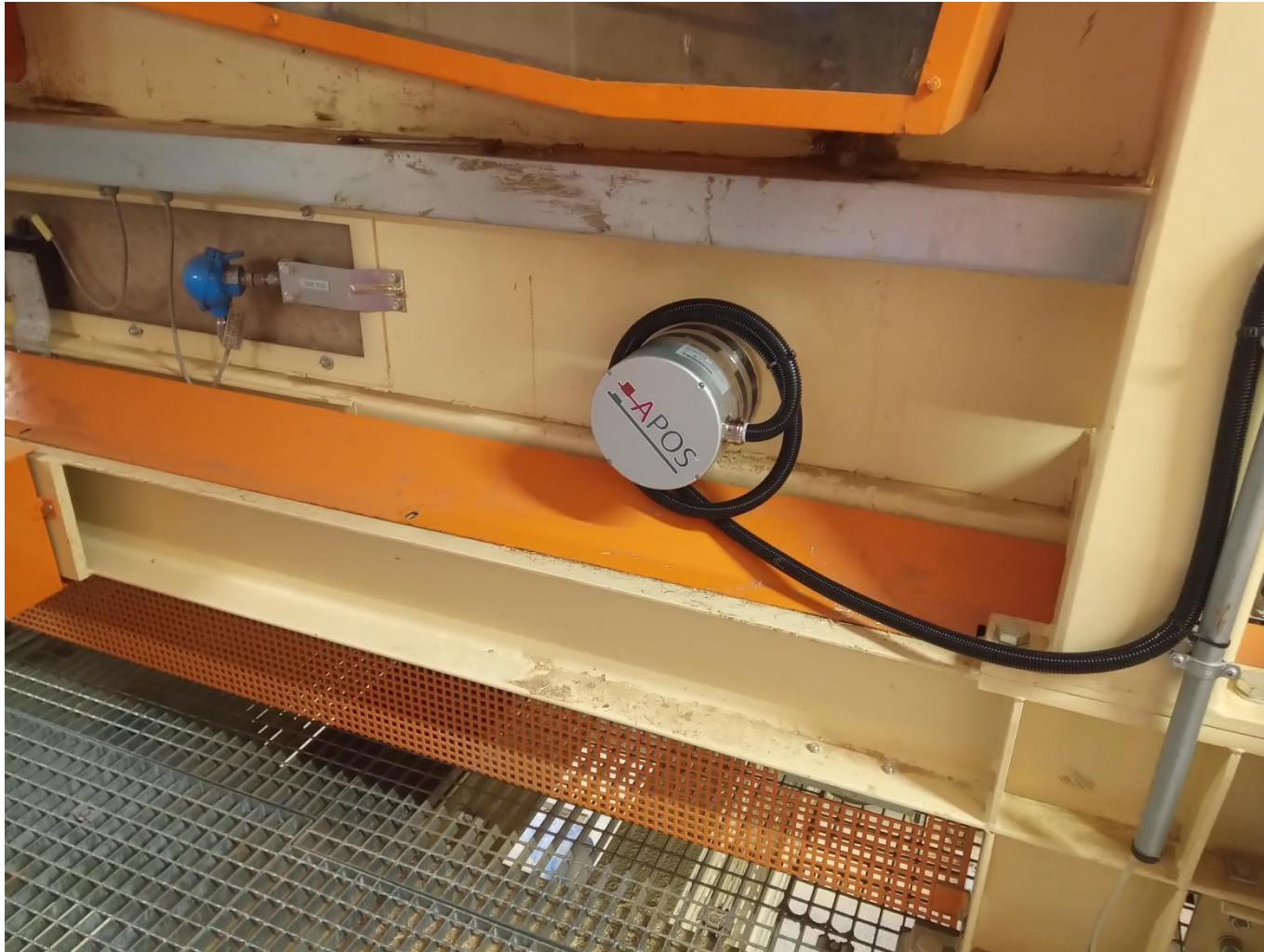
Contact Sensor – Installation example – fuel hopper



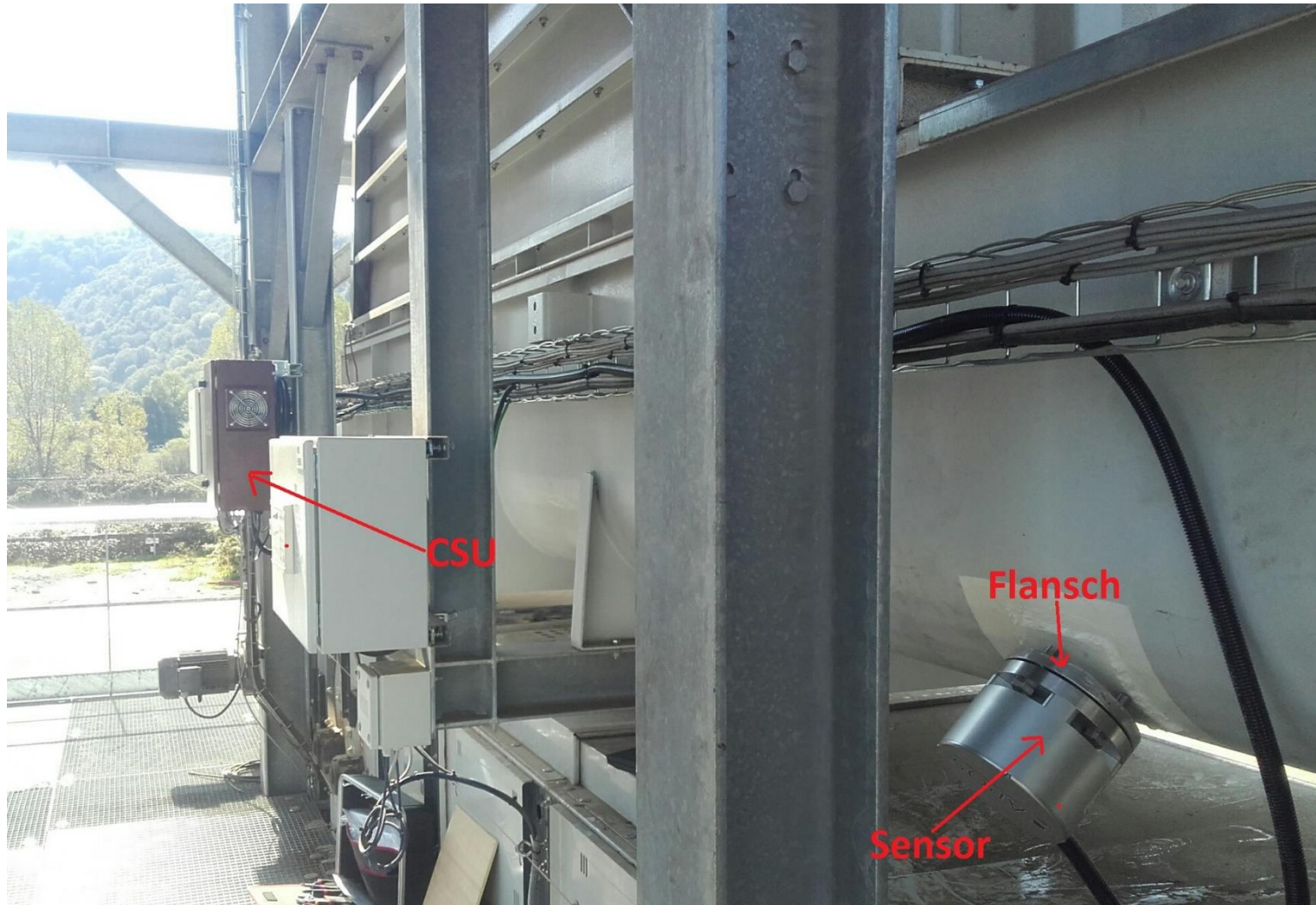
Contact Sensor – Installation example – fuel hopper



Contact Sensor – Installation example – Dust/fiber bunker



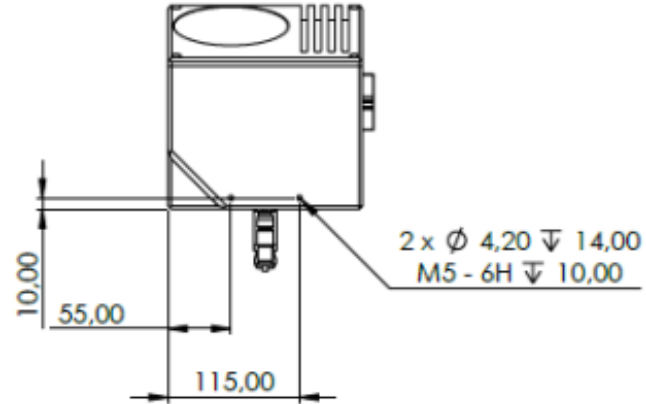
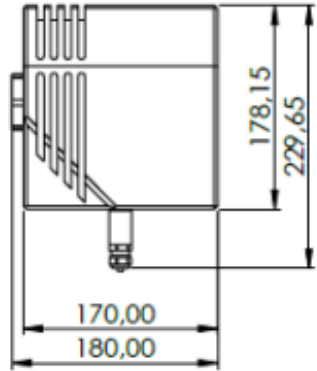
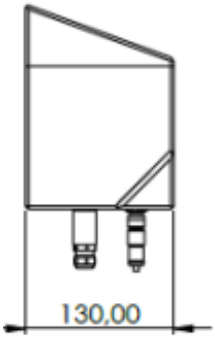
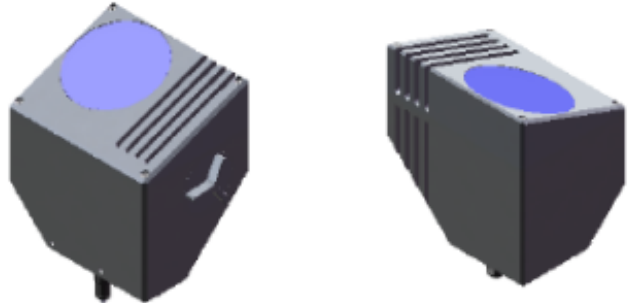
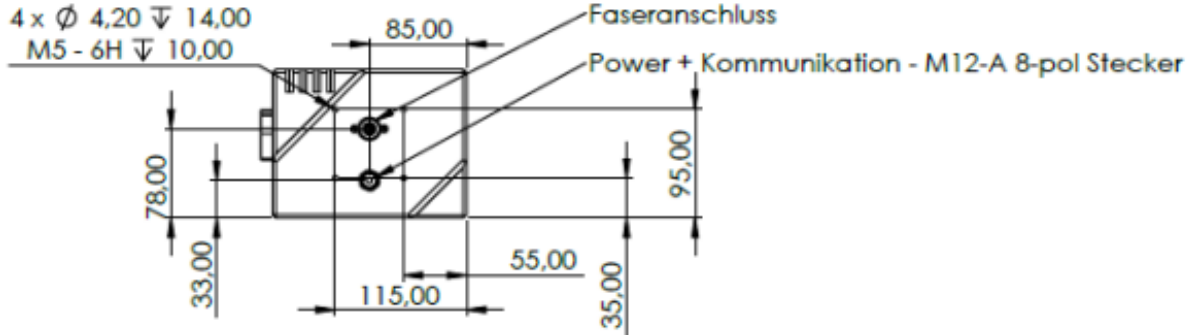
Contact Sensor / CSU control cabinet – Installation example



Distance Sensor



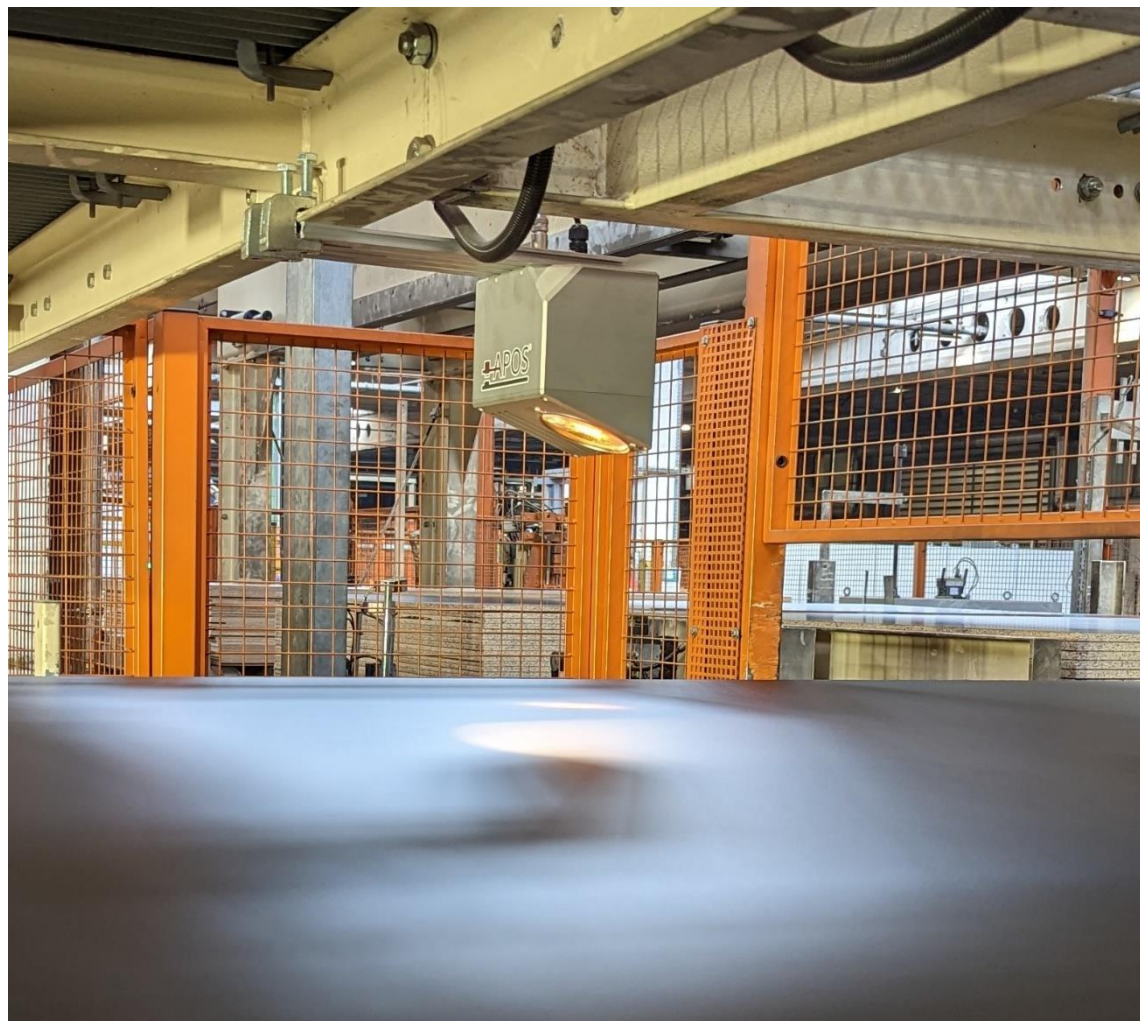
Distance Sensor - drawing



Distance Sensor – Advantages / Characteristics

- Ruggedized
- Distance measurement allows analysis of glued, painted boards/surfaces, printing lines, forming belts, etc.
- Also available with compressed air nozzle to keep dust off the optics
- Nearly Maintenance-free for the customer
- NIR bulbs stand ~4.000 hours
- Lamp replacement is very easy for the customer and is done within minutes

Distance Sensor – Installation example – After short cycle press



Distance Sensor – Installation example – After short cycle press



Distance Sensor – Installation example – After press



Distance Sensor – Installation example – After press



Transflexion probe



Transflexion probe – Advantages / Characteristics

- Online measurement of glue or liquids directly in the pipeline
- Temperatures up to 100°C; high-temperature version up to 200°C available
- Easy to assemble and disassemble for cleaning
- Cleaning cycle dependent on the liquid and flow through the probe otherwise maintenance-free for the customer
- Easy deinstallation for cleaning even when pipe is in operation

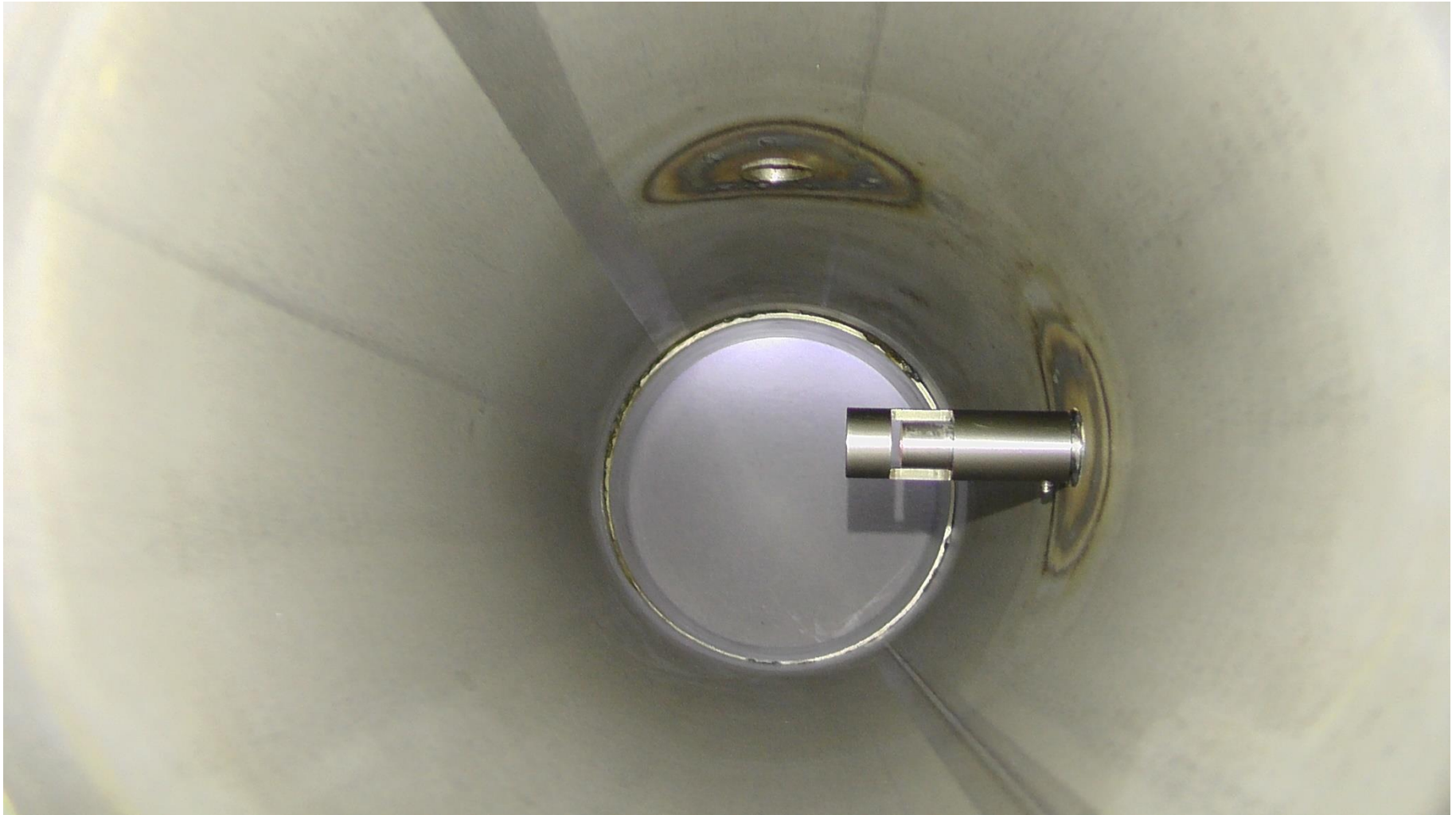
Transflexion probe – installation example – Glue transport pipe - overview



Transflexion probe – installation example – Glue transport pipe – detail view



Transflexion probe – installation example – Glue transport pipe – inner view



APOS GmbH

APOS GmbH

Am Marienhof 4

D-22880 Wedel

www.apos.biz

info@apos.biz

Tel.: +49 - 4103 - 18783-0

Fax: +49 - 4103 - 18783-98



MEMBER OF THE NYNOMIC GROUP



MEMBER OF THE NYNOMIC GROUP